

O W N E R ' S M A N U A L

# AGP-2

ONBOARD ACOUSTIC GUITAR PREAMP

# ABGP

ONBOARD ACOUSTIC BASS GUITAR PREAMP

**FISHMAN<sup>®</sup>**

## AGP-2 / ABGP

Thank you for your purchase of a FISHMAN product. Please read these instructions carefully. If you have any questions or problems, contact our **PRODUCT INFORMATION LINE** at **978-988-9665**.

The Fishman AGP-2 and ABGP preamps are specifically designed for use with piezoelectric pickups. Since piezoelectric pickups require specific electrical environments, the AGP-2 / ABGP feature discrete input stages that maximize the full potential of the pickup. Both units provide active gain control and fully buffered shelving style active boost and cut for BASS and TREBLE. The center frequencies of these controls have been selected for their relationship with acoustic instruments.

The width of the bass and treble separation effectively provides a midrange control; boosting the bass and treble controls simultaneously will provide an effective midrange cut or vice-versa.

The Preamp housing is made of rugged aluminum and weighs only seven ounces. For maximum portability and user convenience, it is equipped with a heavy duty stainless steel belt clip.

**NOTE:** If you have purchased the AGP-2 Preamp Kit that includes the Fishman AG-125 Acoustic Guitar Transducer, be sure to see the enclosed separate instructions to guide you in proper installation of the transducer.

The AGP-2 is designed specifically for acoustic string instruments including guitars, violins, violas, cellos and mandolins.

The ABGP offers the same features as its general purpose counterpart, but has specially selected frequencies specifically chosen for the acoustic bass and the Fishman BP-100 Bass Transducer.

## INSTALLATION

### 1. LOCATION

Determine the best location for the Preamp on your instrument. We recommend the upper bout adjacent to the neck, or in the waist area. Avoid any location that may interfere with neck block, braces or linings.

# ONBOARD ACOUSTIC GUITAR PREAMP

## WARNING

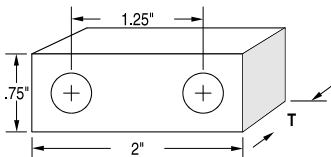
INSTALLATION BY A QUALIFIED PROFESSIONAL REPAIRMAN IS STRONGLY RECOMMENDED. FISHMAN TRANSDUCERS WILL NOT BE RESPONSIBLE FOR ANY DAMAGES TO YOUR INSTRUMENT DUE TO IMPROPER INSTALLATION.

## 2. TEMPLATE

A drilling template is provided for drilling the control shaft holes. Cut out the template outline. Check that it fits between the upper and lower linings when held inside the guitar at the chosen location. Tape the template at the location on the outside of the guitar. With a sharp scribe, pierce the template at the marks. Remove the template. This should provide you with two drilling centers marked on the side of the guitar. These centers will be 1.250 inch (31.8mm) apart. At each center, drill a .375 inch (9.5mm) hole through the side of the guitar. We recommend using a sharp 3/8 inch spur bit for this operation.

## 3. SPACER BLOCK

We strongly advise that a wooden spacer block (see Figure 1) be used to add strength to the mounting area of the guitar and to more evenly distribute the load of the pre-amp. We do not recommend



using a hex nut and lock washer as the inside bearing surface to accommodate the thickness of the inside of your instrument because this could result in possible damage to the instrument itself

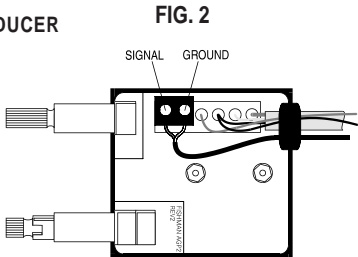
## 4. PREPARING THE SPACER

Using the drilling template as a guide, make a rectangular wooden spacer that is 2.00 inch x .750 inch x T (50.8mm x 19.0mm x T). T is the measurement derived from the protruding bushing length minus the outside hardware thickness (Figure 1) To derive T, insert the control shafts through the

holes from the inside of the guitar. Next, measure the length of the threaded bushing that protrudes out from the side of the instrument. From this measurement, subtract the thickness of the outside hardware (hex nut and finish washer).

## 5. WIRING THE TRANSDUCER

Remove the cover from the AGP-2 Preamp. Locate the terminal block with two sections to be used to connect the transducer leads (see Figure 2). Thread the transducer wire through the rubber grommet where the wire harness enters the preamp. Strip and tin the signal and ground wires from the transducer and connect them to the terminal block as shown in Figure 2. Check for shorts. Replace the cover and screws (SEE NEXT SECTION), being careful to engage the grommet in the appropriate slot.



## 6. MOUNTING THE BATTERY HOLDER

The AGP-2 is supplied with a battery holder that can be attached to the preamp cover with the screws provided (see Figure 3), or be attached to the neck block (see Section 6a).

Be sure to check and adjust the fit of the battery in the holder before installing the AGP-2 Preamp inside the instrument.

### 6a. OPTIONAL BATTERY HOLDER MOUNT

Cut a block of 1/4" plywood approximately 1-1/2" x 2-1/2" (40mm x 65mm). Using two Number 4 pan-head sheet metal screws (1/4" length), attach the battery holder to the wooden block. The assembly can then be attached to the neck block with wood glue, double sided tape, or Velcro.

# ONBOARD ACOUSTIC GUITAR PREAMP

## IMPORTANT

*Although the supplied battery holder should provide adequate capacity to grip the battery at all times, we strongly recommend removal of the battery when shipping or flying with your instrument. FAILURE TO REMOVE BATTERY COULD RESULT IN DAMAGE TO YOUR INSTRUMENT. Fishman will not be held responsible for any such damage as a result of shipping or handling.*

## 7. MOUNT THE PREAMP

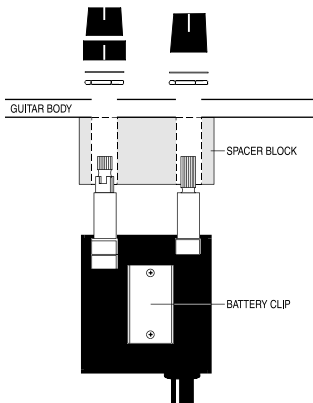
Slip the wooden spacer block (prepared earlier) over the control bushings and mount the preamp. The outside hardware should include a smooth 3/8" dress washer and a 3/8" hex nut. Tighten the hex nut.

## 8. PREPARE THE ENDBLOCK

The objective of this method is to drill a hole for the jack into the endblock, with the endpin in place. You may remove a loose endpin and refasten it with cyanoacrylate glue before starting this procedure.

1. Apply masking tape around the endblock area to protect the instrument.
2. Cut the endpin with an X-Acto saw blade 1/16" away from the body.
3. Centerpunch a guide hole in the center of the trimmed endpin.
4. Drill a 1/8" pilot hole through the endblock.
5. Line up the 15/32" Spade bit in the pilot hole and begin drilling. Maintain a perpendicular plunge in relation to the instrument. Use steady (but not heavy) pressure, especially as the drill exits inside the guitar.

**IMPORTANT:** To avoid damage to the instrument, let the drill come to a complete stop before removing it from the hole.



## 9. WIRING THE OUTPUT JACK

Solder the red wire to the tip (short terminal).

Solder the black wire to the ring (longer terminal).

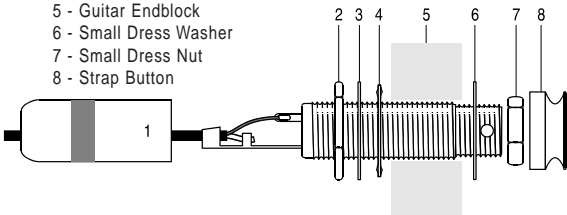
Solder the shielding to the ground tab.

After soldering, bend the strain relief tabs around the grey jacket.

## 10 - FASTEN THE JACK IN THE ENDPIN HOLE

Follow this sequence when installing the endpin jack:

- 1 - Shielding Cap (optional)
- 2 - First Large Hex Nut
- 3 - Large Dress Washer
- 4 - Star Washer
- 5 - Guitar Endblock
- 6 - Small Dress Washer
- 7 - Small Dress Nut
- 8 - Strap Button



The jack should protrude at least  $\frac{5}{16}$ " and no more than  $1\frac{1}{32}$ " outside of the guitar body for proper fit.

After fitting the small dress washer and nut over the end of the jack, insert the  $\frac{3}{32}$ " allen wrench through the small hole on the end of the jack.

Tighten the nut with the  $\frac{1}{2}$ " open end wrench while holding the jack in place with the allen wrench. Thread and hand tighten the the strap button.

**NOTE:** With the strap button in place, the end of the jack should protrude slightly to allow proper plug fit.



# ONBOARD ACOUSTIC GUITAR PREAMP

## 11. KNOB ALIGNMENT

The stacked knob set controls treble boost & cut (small knob) and bass boost & cut (large knob). Both knobs have a center-detent to indicate flat position. Place the bass (large outer ring) knob onto the stacked shaft so that the two inner protrusions slide into the corresponding slots on the outer shaft. Now place the smaller treble knob onto the inner shaft. The white position markers should align with each other in the center detent position. Now place the large volume knob onto the appropriate shaft; rotate the knob and remove to re-position the line if necessary for the desired sight reference position.

## 12. READY FOR USE

The power is switched on only when a 1/4" mono guitar cable is plugged into the output jack. The AGP-2 features a "soft" turn on mode. This means that the unit powers up gradually over several seconds once the instrument is plugged in.

## SPECIFICATIONS

|   |  |
|---|--|
| SYSTEM GAIN   | 9 dB (input to output at 1 kHz)<br>All tone controls flat. |
| Maximum input voltage before clipping with all controls at full boost | .8V P-P  |
| AGP-2 TONE CONTROLS   |  |
| Treble: Boost and Cut   | ± 3dB at 1700 Hz<br>± 14dB at 20 kHz                       |
| Bass: Boost and Cut   | ± 3dB at 350 Hz<br>± 8dB at 50 Hz                          |
| Frequency Response  | 20 Hz to 20 kHz ±2dB All tone controls flat                |
| ABGP TONE CONTROLS  |  |
| Treble: Boost and Cut   | ± 3dB at 850 Hz<br>± 14dB at 20 kHz                        |
| Bass: Boost and Cut   | ± 3dB at 350 Hz<br>± 8dB at 50 Hz                          |
| Frequency Response  | 20 Hz to 20 kHz ±2dB All tone controls flat                |
| POWER SUPPLY  | 9 Volts (battery not included)                             |
| Battery Life  | 150 hours continuous use (alkaline battery)                |

# LIMITED WARRANTY

The FISHMAN AGP-2 ACOUSTIC GUITAR PREAMP is warranted to function for a period of One (1) Year from the date of purchase. If the unit fails to function properly within the warranty period, free repair and the option of replacement or refund in the event that FISHMAN is unable to make repair are FISHMAN's only obligations. This warranty does not cover any consequential damages or damage to the unit due to misuse, accident, or neglect. FISHMAN retains the right to make such determination on the basis of factory inspection. Products returned to FISHMAN for repair or replacement must be shipped in accordance with the Return Policy, as follows. This warranty remains valid only if repairs are performed by FISHMAN. This warranty gives you specific legal rights and you may also have other rights which may vary from state to state.

## RETURN POLICY

To return products to FISHMAN TRANSDUCERS, you must follow these steps...

1. Call FISHMAN TRANSDUCERS at 978-988-9199 for a Return Authorization Number ("RAN").
2. Enclose a copy of the original Bill of Sale as evidence of the date of purchase, with the product in its original packaging and a protective carton or mailer.
3. FISHMAN TRANSDUCERS' technicians will determine whether the item is covered by warranty or if it instead has been damaged by improper customer installation or other causes not related to defects in material or workmanship.
4. Warranty repairs or replacements will be sent automatically free of charge.
5. If FISHMAN TRANSDUCERS determines the item is not covered by warranty, we will notify you of the repair or replacement cost and wait for your authorization to proceed.



**FISHMAN TRANSDUCERS®**

340-D Fordham Road Wilmington MA 01887 USA

Phone 978-988-9199 • Fax 978-988-0770

[www.fishman.com](http://www.fishman.com)